

## 2 General information

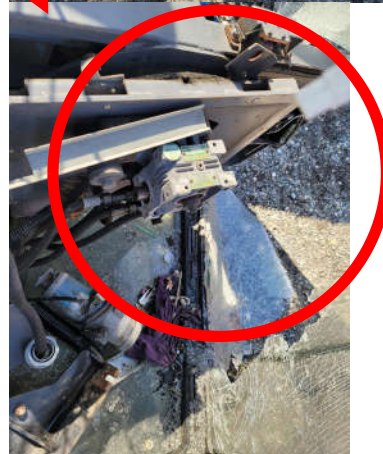
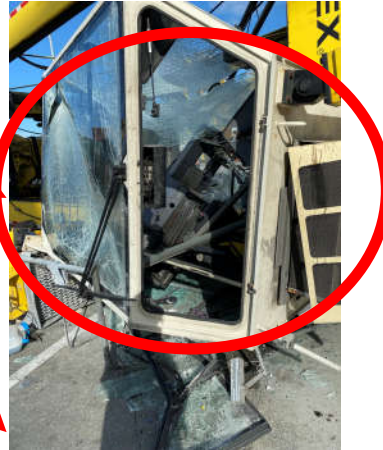
### 2.1 Straddle Carrier data

Crane type/model:	NSC 644 E
Serial number:	17096900-08
Year of construction:	2016
Customer:	
Location:	Kingston, Jamaica
Contact on-site:	
Date of Inspection:	April 11, 2022
Inspected by:	
Date of report:	04/14/2022
Report performed by:	
<b>Operation hours:</b>	
Diesel engine:	27318h last recorded hour reading from Display

### 3.3 General Notes

1. **Tire:** 7 Tires were in good/fair condition. Tire No.4 had a slight uneven wear. All tire pressures were correct at the time. (Tire check 04/08/2022 from KFTL available)
2. **Steering Rods:** All steering rods were in normal condition, without any damages even after the Incident occurred.
3. **Gantries:** Left-side gantry could not be inspected because the Straddle Carrier was laying on it after the Incident. The right-side Gantry has only normal scratches and usage marks.
4. **Legs:** Left-side legs could not be inspected because the Straddle Carrier was laying on it after the Incident. No determinations about the structure can be provided at this point without lifting the Straddle Carrier up for more thorough inspection.
5. **Machine Platform:** There is major damage to the platform itself. However, the hoist installation shifted, SMP2 (inverter cabinet) cabinet broke off its mount and fell against the power unit, the power unit broke off its brackets, resistor banks have major deformations, SMP1 has deformations, and the platform and ladders are deformed or have major damage.
6. **Cabin:** The glass on all sides is broken; chair sheared off the mounting, as also is the frame deformed.

Cabin major damage



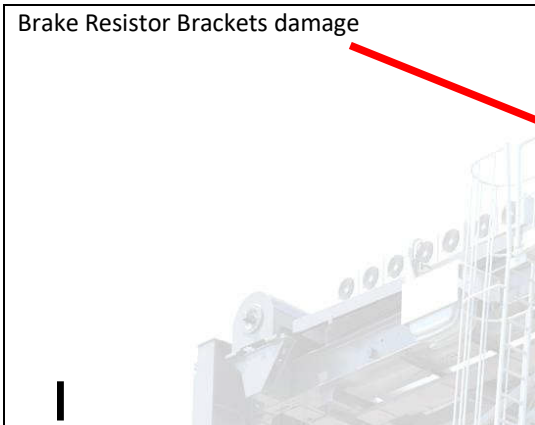

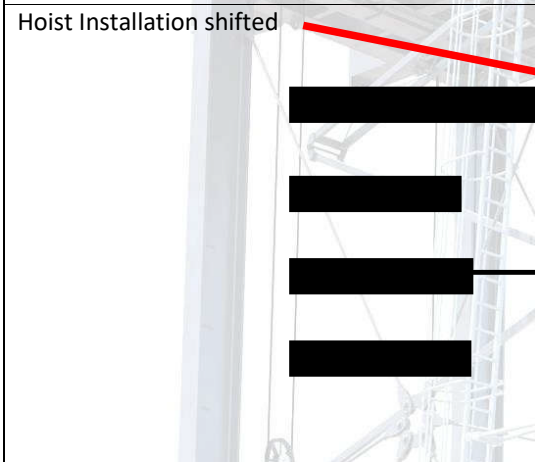

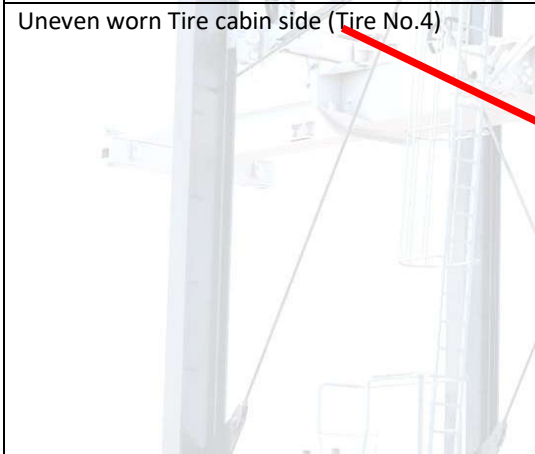

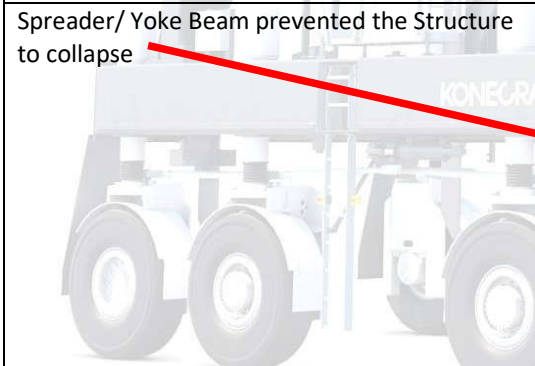

Power Unit damage (been removed from Straddle Carrier after Incident because of safety concerns at the Terminal)

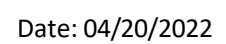


Brake Resistor Brackets damage





<p>Brake Resistor Brackets damage</p> 	
<p>Hoist Installation shifted</p> 	
<p>Uneven worn Tire cabin side (Tire No.4)</p> 	
<p>Spreader/ Yoke Beam prevented the Structure to collapse</p> 	



Part number	Quantity		Description
NM1709691310	1	PIECE	POWER UNIT
NM1709691308	1	PIECE	ELECTRICAL EQUIPMENT - MACHINERY PLATFORM
NM3921100000	1	PIECE	ROOF FOR SWITCH CABINET SMP1
HT7927146300	1	PIECE	FUEL SYSTEM MACHINERY PLATFORM
HT7326273400	1	PIECE	ROPE COVER LEFT
113500112	16	PIECE	WASHER 8,4 B
110739212	8	PIECE	HEXAGON SCREW M 8 X 35
113163603	8	PIECE	HEXAGON NUT M 8
HT7326134800	1	PIECE	CROSSING MACHINERY PLATFORM
NM3728000400	1	PIECE	PIPING CABLE PANTOGRAPH
NM3720000000	1	PIECE	CABLE PANTOGRAPH
NM3322000800	4	PIECE	ROPE FIXED POINT
NM3224100100	1	PIECE	MOTOR OIL DRAIN PIPE
NM3124000000	1	PIECE	COOLANT DRAIN
NM3011000700			WEATHER PROTECTION HOOD
NM3930001100	1	PIECE	FIRE PROTECTION DAFO
NM3321000800			SET OF WIRE ROPES
HT7326134000	1	PIECE	STEP TREAD MACHINERY PLATFORM
NM1709692200			ACCESS AND PLATFORM
NM1709694000	1	PIECE	DRIVER CAB
142200035	8	PIECE	ROUND NUT TYP RMS M36
110952201	24	PIECE	HEXAGON SCREW M 30 X 90
113178756	80	PIECE	HEXAGON NUT M 30
113522506	160	PIECE	WASHER 31
HT7329563004	1	PIECE	PLATE 8 X 70 X 390
HT7329563003	1	PIECE	PLATE 8 X 70 X 390
NM1709695100	1	PIECE	LEG FRONT LEFT
NM1709695300	1	PIECE	LEG REAR LEFT
NM3631000700	2	PIECE	SLIDING SUPPORT LEFT
NM3632000500	2	PIECE	SLIDING SUPPORT RIGHT
HT7326021500	1	PIECE	ATTACHMENT OIL COOLER MACHINERY PLATFORM
HT7918209000	1	PIECE	HANDRAIL MACHINERY PLATFORM
HT7326133400	1	PIECE	ATTACHMENT SWITCH CABINET
NM3323000000	1	PIECE	GUIDE PULLEY
NM8306010300	1	PIECE	Switch Cabinet +SMP2
NM1709691338	1	PIECE	Electrical Equipment
HT7326180400	1	PIECE	CONSOLE BRAKE RESISTOR
HT7326180400	1	PIECE	CONSOLE BRAKE RESISTOR
HT7326180500	1	PIECE	CONSOLE BRAKE RESISTOR
NM8319010000	1	PIECE	BRAKE RESISTOR
147220010	1	PIECE	BRAKE RESISTOR

## 5 Report

Based on the post-Incident inspection and the facts known to date, we conclude that the Straddle Carrier can be repaired; provided, however, additional inspections are needed with respect to certain portions of the Straddle Carrier that could not be inspected at the time of inspection on April 11, 2022. However, Konecranes the final decision whether to invest the money needed to bring this Straddle Carrier back in operation or replace it with new equipment rests with [REDACTED].

[REDACTED] During the investigation, no technical issues with the Straddle Carrier that might have caused or led to the Incident were detected. Additional pictures are available upon request.