

THE INFORMATION CONTAINED HEREIN IS THE CONFIDENTIAL PROPERTY OF ENERFLEX ENERGY SYSTEMS, A TOROMONT INDUSTRIES COMPANY, AND IS NOT FOR PUBLICATION, AND NO PART THEREOF SHALL BE COPIED OR COMMUNICATED TO A THIRD PARTY WITHOUT AUTHORIZATION FROM ENERFLEX ENERGY SYSTEMS.

**P-1301
COMPRESSOR OIL PUMP**

SUPPLIED BY ARIEL
MFG: VIKING
MODEL: HL-495
POWER: 1/2 HP
DIFF PRESS: 50 PSID
MAX FLOW: 18 GPM
MAT'L: IRON CASING, DUCTILE
IRON ROTOR, STEEL SHAFT
WEIGHT: 40 LBS

**HBG-1301
COMPRESSOR LUBE OIL COOLER**

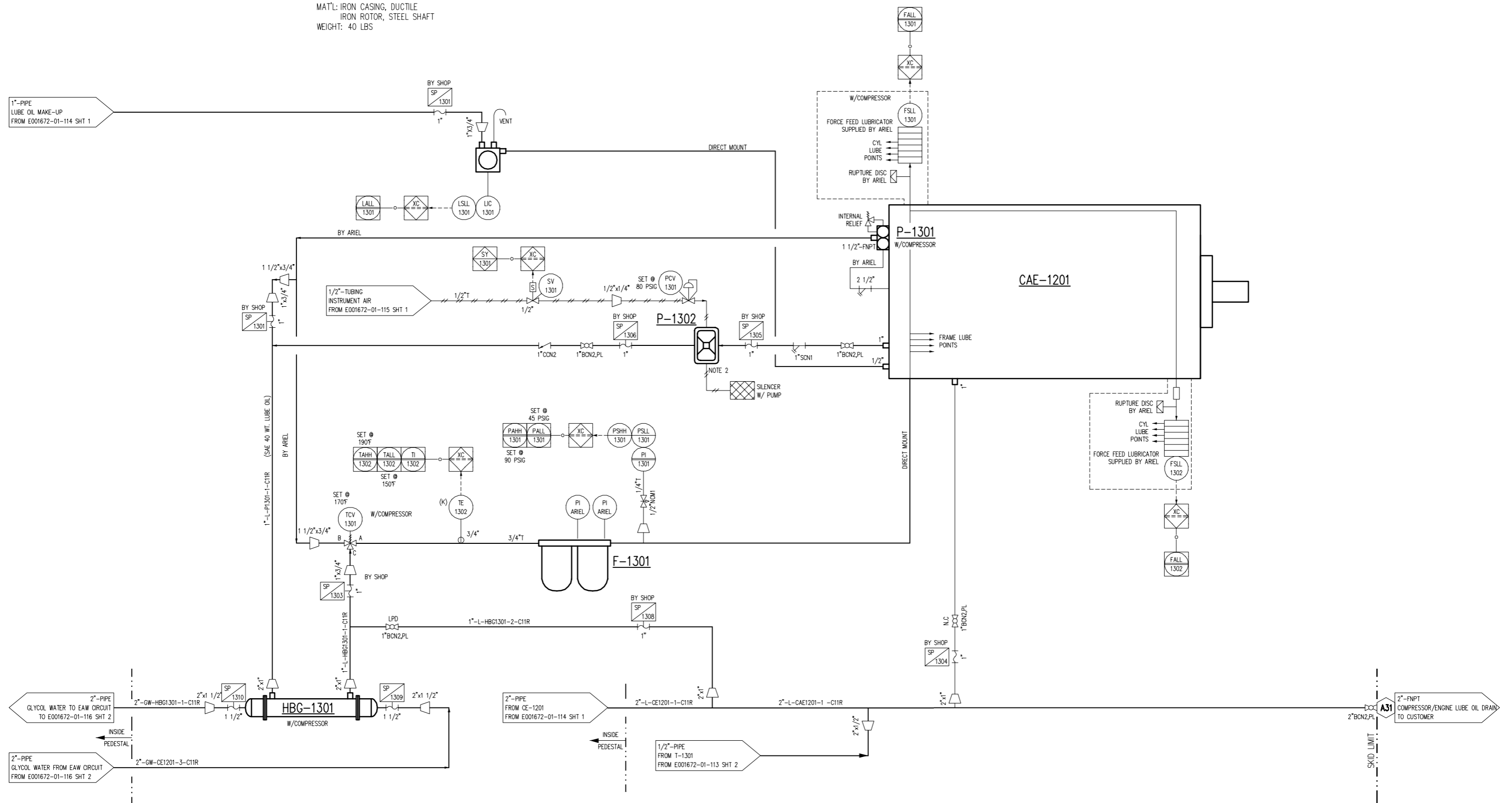
SUPPLIED BY ARIEL
MODEL: B-2073
DRAWING#: A-4154

**F-1301
OIL FILTER**

SUPPLIED BY ARIEL

**P-1302
COMPRESSOR PRE-LUBE OIL PUMP**

MFG: YAMADA
MODEL: NDP-25
POWER: PNEUMATIC
MAX FLOW: 25.8 GPM
MAT'L: ALUMINUM
WEIGHT: 33 LBS



PROJECTS

E001672-01			
E001672-02			
E001672-03			

FINAL
AS BUILT

NAME M. Winkler DATE 06/30/15

- NOTES:**
- OPTIONAL START GAS SYSTEM.
 - SILENCER WILL BE INSTALLED IF USING START AIR.
 - COMPRESSOR OIL SAMPLING PORT.

REV	DESCRIPTION	DATE	BY	APR
2	AS-BUILT	06/30/15	MW	AR
1	RELEASED FOR FABRICATION	04/08/15	AM	AR
0	FOR APPROVAL	12/19/14	AB	AR

DATE	12/19/14	SCALE	NONE
DRAWN BY	A. Boudreaux	CHECKED BY	A. Reddy
PROJECT MANAGER	A. Reddy	PROJECT ENGINEER	A. Reddy
CUST PO	30001531		

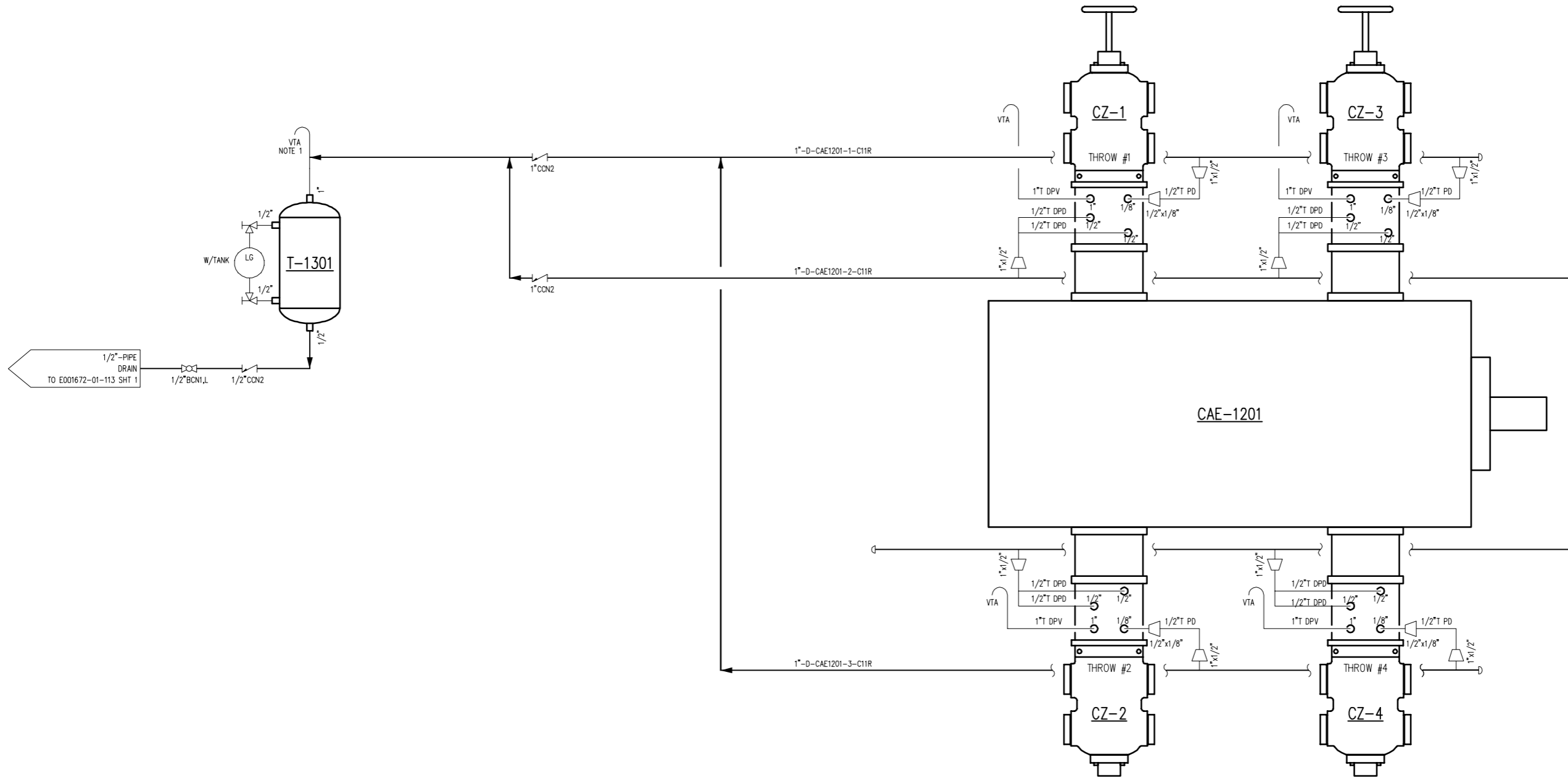
STEP CODE	WORK ORDER
-----------	------------

ENERFLEX
Houston, Texas,
USA

P & I DIAGRAM
COMPRESSOR
LUBE OIL/UTILITIES

**T-1301
DRIP POT**

MFG: KENCO
MODEL: 5G
VOLUME: 5 GALLONS
MAT'L: CARBON STEEL



PLOT DATE: Jun 30, 2015, 10:15 AM. THE INFORMATION CONTAINED HEREIN IS THE CONFIDENTIAL PROPERTY OF ENERFLEX ENERGY SYSTEMS, AND IS NOT FOR PUBLICATION, AND NO PART THEREOF SHALL BE COPIED OR COMMUNICATED TO A THIRD PARTY WITHOUT AUTHORIZATION FROM ENERFLEX ENERGY SYSTEMS.

PROJECTS			
E001672-01			
E001672-02			
E001672-03			
TOTAL PACKAGES REQ'D = 3			

**FINAL
AS BUILT**

NAME: *M. Winklers* DATE: 06/30/15

NOTES:
1. DRIP POT VENTED TO ATMOSPHERE.

REV	DESCRIPTION	DATE	BY	APR
2	AS-BUILT	06/30/15	MW	AR
1	RELEASED FOR FABRICATION	04/08/15	AM	AR
0	FOR APPROVAL	12/19/14	AB	AR

DATE	12/19/14	SCALE	NONE
DRAWN BY	A. Boudreaux	CHECKED BY	A. Reddy
PROJECT MANAGER	A. Reddy	PROJECT ENGINEER	A. Reddy
CUST PO	30001531		

STEP CODE	WORK ORDER
-----------	------------

ENERFLEX
Houston, Texas,
USA

DWG NO: E001672-01-113

P & I DIAGRAM
COMPRESSOR UTILITIES
VENT/RAIN SYSTEM

SHT 2 OF 2 REV 2