

87M DP2 PLATFORM SUPPLY VESSEL



GENERAL SPECIFICATION

Official No	:		ACCOMMODATION		PROPULSION SYSTEM
IMO No	:		1 Man Cabin x 15	: 15	Main Genset Engine
Call Sign	:		2 Men Cabin x 10	: 20	(Cummins)
Port of Registry	:	Port Kelang	4 Men Cabin x 3	: 12	Propulsion E. Motor
Flag	:	Malaysian	Total Persons On Board	: 47	Propeller
Year Delivered	:	2014			360' azimuth with Kort Nozzle.
Hull No	:		Hospital Room	: 1 Bed	Bow Thruster
Builder	:	Mawei Shipyard China	[FULLY AIR - CONDITIONED]		
Designer	:	MMC Ship Design Ltd.			Retractable Thruster
Classification	:				PROPULSION PERFORMANCE
Notation	:				Maximum Speed
					Economic Speed

PRINCIPAL PARTICULARS

Length Overall	: 87.07 M
Breadth Moulded	: 18.80 M
Depth Moulded	: 7.40 M
Summer Draft	: 6.05 M
Gross Tonnage	: 3601
Net Tonnage	: 1429
Deadweight (Summer Draft)	: 5126 Tons (approx.)
Free Deck Space	: 1000 m ² (approx.)
Deck Strength	: 5 Tons/m ²

SAFETY EQUIPMENT

Liferafts	: 8 x 20 men
Rescue Boat	: 1 x 6 men c/w pivoting davit.
Scrambling Net	: 2 set

Remarks: Vessel's Life Saving Equipment are in accordance with SOLAS / LSA Code & Flag State requirements.

FIRE FIGHTING & ANTI POLLUTION EQUIPMENT

FiFi Classification	: FFV1
Fire Pumps Capacity	: 2 x 1600 m ³ /hr @ 14 bar
Fire Monitor Capacity	: 2 x monitor capacity of 1200 m ³ /h water
Oil Dispersant System	: 2x6m spray booms with 8m3 tank

Remarks: 1 x Fixed Fire-Fighting System (CO2) and 1 x Fixed Local Application System (Water Mist) to Machinery Space of Cat A, Fire Detection and Alarm System and Fire Fighting Equipment are in accordance with SOLAS/FFS Code & Flag State Requirements.

ANCHOR MOORING SYSTEM

Anchor Type	: High Holding Power Anchor
Anchor Capacity	: 2 x 2475 kg
Anchor Chains	: 2 x 9 Shackles L, 50 mm Dia., Gr2a

DECK EQUIPMENT

Anchor Windlass and Mooring Winch	: Electro Hydraulic System, Windlass with 10 Tons Duty Pull @ 9 m/min.
Tugger Winch	: 2 x 10 Tons @ Electro. Hyd. Sys.
Capstan	: 2 x 7.5 Tons @ Electro. Hyd. Sys.
Deck Crane	: 1 x 2 Tons (SWL) @10m outreach, fixed boom crane.
Reefer Point	: 8 Points, 480V/3 Ph/60Hz 2 Points, 440V/3Ph/60Hz 2 Points, 220V /1Ph/60Hz

DISCHARGE PUMPS CAPACITIES

Fuel Oil (Cargo)	: 1 x 150 m ³ /hr @ 90 m head
Ballast Pump	: 1 x 150 m ³ /hr @ 90 m head
Fresh Water (Cargo)	: 1 x 150 m ³ /hr @ 90 m head
Liquid Mud (Cargo)	: 1 x 150 m ³ /hr @ 63 m head

OTHER EQUIPMENT CAPACITIES

Air Compressor for Bulk Sys.	: 2 x 1500 m ³ /h @ 6.0bar
Air Dryer for Bulk Sys.	: 2 x 1800 m ³ /h @ 6.5bar
Sewage Treatment	: 1 unit, suitable for 47 men
Fresh Water Maker	: 1 x 5.2 Tons/day

ELECTRIC POWER GENERATION

Main Generators	: 4 x 1825 kW@480V/3Ph/60Hz
Emergency/ Harbour Generator	: 1 x 350 kW@480V/3Ph/60Hz

DYNAMIC POSITIONING SYSTEM

DP-2 System	: 1 set
Maker	: Kongsberg

NAVIGATION & COMMUNICATION EQUIPMENT

GPS	: 1 unit
Gyro Compass	: 3 units
Magnetic Compass	: 1 unit
Radar (ARPA)	: 2 units (1 x X-Band, x S-Band)
AIS	: 1 unit
Echo Sounder	: 1 unit
Speed Log	: 1 unit
Anemometer	: 3 units
BNWAS	: 1 set
VDR	: 1 set
Electronic Chart (ECDIS)	: 1 set
Auto Pilot	: 1 unit
CCTV	: 1 set
Search Light	: 2 units
GMDSS Radio A3	: 1 complete set
Navtex Receiver	: 1 unit
Fleet Broadband	: 1 set
VSAT	: 1 unit
Interior Com System	: 1 set
PA System	: 1 set
Sound Power Phone	: 1 set

Water Ballast/ Drill Water Tanks (m³)

1 Forepeak Tank	184.04
2 No.1 WB/ DW (P)	184.04
3 No.1 WB/ DW (S)	180.94
4 No.2 WB/ DW (P)	152.48
5 No.2 WB/ DW (S)	152.48
6 No.3 WB/ DW (P)	150.87
7 No.3 WB/ DW (S)	150.87
8 No.4 WB/ DW (P)	165.87
9 No.4 WB/ DW (S)	165.87
10 No.5 WB/ DW (P)	42.42
11 No.5 WB/ DW (S)	42.42
12 No.6 WB/ DW (P)	57.84
13 No.6 WB/ DW (S)	57.84
14 No.7 WB/ DW (P)	74.99
15 No.7 WB/ DW (S)	69.27
TOTAL:	1832.24

Fresh Water Tanks (m³)

1 No.1 FW (P)	129.7
2 No.1 FW (S)	129.7
3 No.2 FW (P)	40.54
4 No.2 FW (S)	40.54
5 No.3 FW (P)	80.89
6 No.3 FW (S)	80.89
TOTAL:	502.26

Potable Water Tanks (m³)

1 No.1 Potable Water (P)	83.73
2 No.1 Potable Water (S)	84.12
TOTAL:	167.85

Liquid Mud/ Brine Tanks (m³)

1 No.1 Mud/ Brine (P)	362.02
2 No.1 Mud/ Brine (S)	362.00
3 No.2 Mud/ Brine (P)	286.8
4 No.2 Mud/ Brine (S)	286.78
5 No.4 Mud/ Brine (P)	341.34
6 No.4 Mud/ Brine (S)	341.31
TOTAL:	1980.25

Liquid Mud/ Brine/ Methanol Tanks (m³)

1 No.3 Mud/Br/Methanol (P)	214.71
2 No.3 Mud/Br/Methanol (S)	214.7
TOTAL:	429.41

Fuel Oil Tanks (m³)

1 No.1 FO DAY (P)	15.24
2 No.1 FO DAY (S)	15.24
3 No.2 FO DAY (P)	2.57
4 FO Settling (P)	38.1
5 FO Settling (S)	38.1
6 No.1 FO (C)	100.34
7 No.2 FO (P)	183.84
8 No.2 FO (S)	183.84
9 No.3 FO (P)	182.61
10 No.3 FO (S)	182.61
TOTAL:	942.49

Lube Oil Tanks (m³)

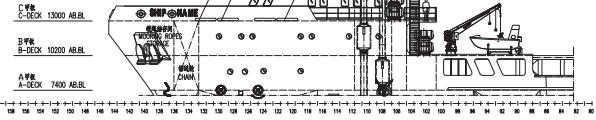
1 Lube Oil Tank	1.905
TOTAL:	1.905

Other Tanks (m³)

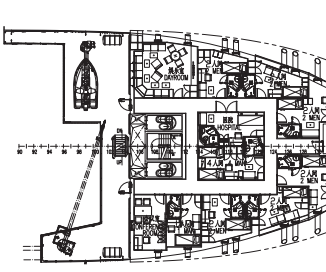
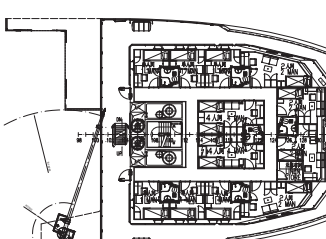
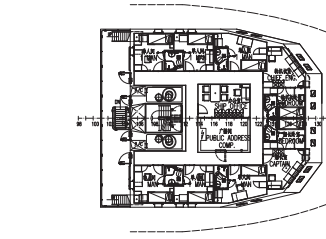
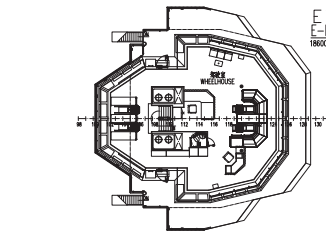
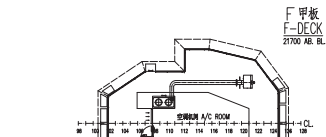
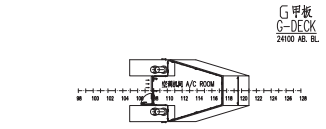
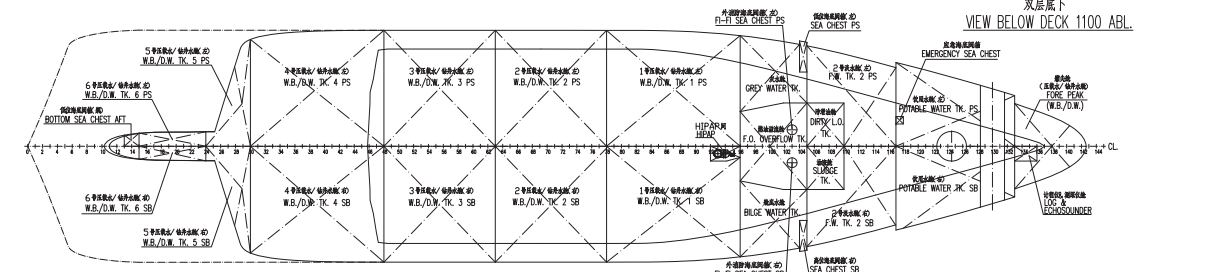
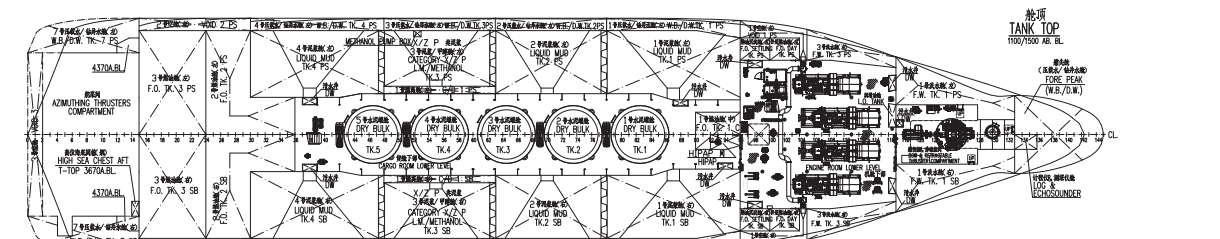
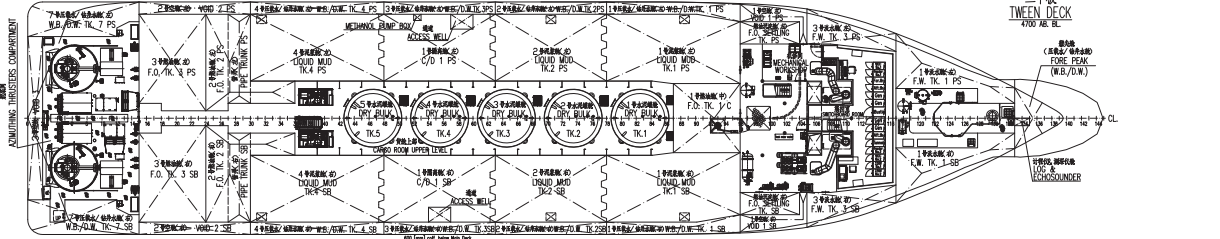
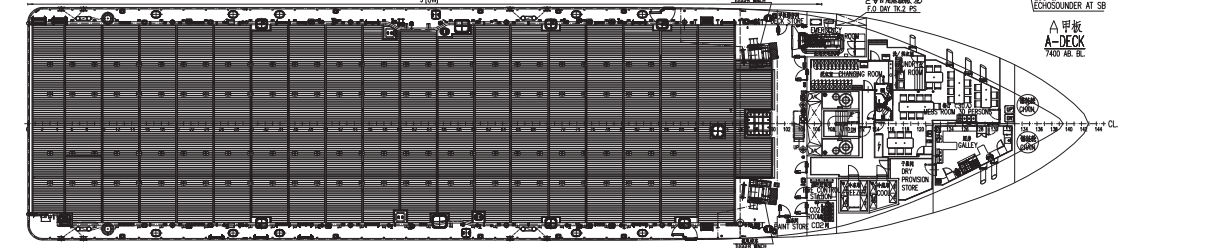
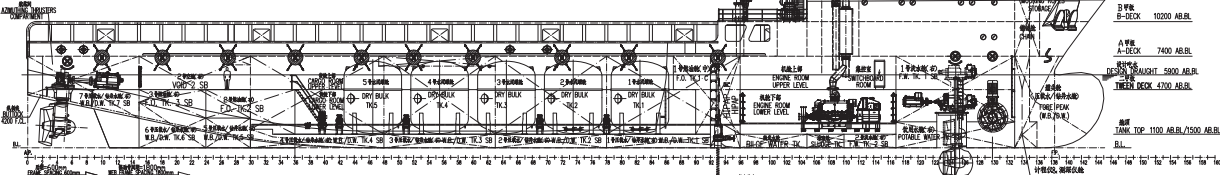
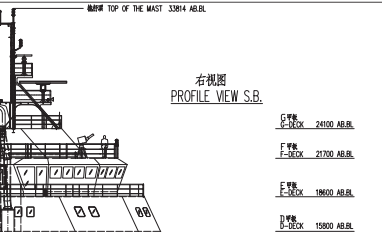
1 FO Over Flow	35.89
2 Grey Water	27.21
3 Bilge Water	27.21
4 Dirty LO	10.85
5 Sludge	10.85
TOTAL:	112.01



左视图
PROFILE VIEW P.S.



右视图
PROFILE VIEW S.B.



TYPE OF CABINS	NO. OF CABINS	NUMBER OF BERTHS
1 MAN with BEDROOM 单人室兼人房	2	2
1 MAN 单人房	13	13
2 MEN 2人房	10	20
4 MEN 4人房	3	12
TOTAL 总计		47

TANK CONTENT	吨数	m³	BARRELS	GALLONS	CBFT
LIQUID MUD 泥浆	2409.65				
DRY BULK 干泥/煤粉	400.70				
W.B./D.W. 压舱/储水舱	1832.23				
FRESH WATER 淡水	502.25				
POTABLE WATER 饮用水	167.84				
FUEL OIL 燃油	942.42				
METHANOL 甲醇	429.40				

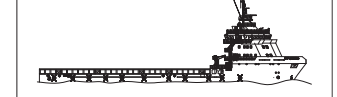
LENGTH OVER ALL 总长	L _{oa}	87.07 (m)	286'
LENGTH BETWEEN PERPENDICULARS 垂线间长 <th>L_{bp}</th> <td>83.00 (m)</td> <td>271'</td>	L _{bp}	83.00 (m)	271'
BREADTH MOLDED 型宽 <th>B</th> <td>18.80 (m)</td> <td>62'</td>	B	18.80 (m)	62'
DEPTH TO MAIN DECK 型深 <th>d</th> <td>7.40 (m)</td> <td>24'</td>	d	7.40 (m)	24'
DESIGN DRAUGHT 设计吃水 <th>d</th> <td>5.90 (m)</td> <td>19'</td>	d	5.90 (m)	19'
Max SUMMER DRAUGHT 最大夏季吃水 <td>-</td> <td>6.05 (m)</td> <td>20'</td>	-	6.05 (m)	20'
AIR DRAUGHT (design draught) 露天高度 <td>-</td> <td>27.92 (m)</td> <td>91'</td>	-	27.92 (m)	91'
WORK DECK AREA 甲板面积 <td>-</td> <td>1000 m²</td> <td>10764ft²</td>	-	1000 m²	10764ft²

DEADWEIGHT DESIGN (5.9 m) 载重吨 (吃水=5.9m)	DWT	4936.2 MT
DEADWEIGHT Max Summer draught (6.05 m) 载重吨 (吃水=6.05m)	DWT	5148.3 MT

MAIN ENGINES 主机	TYPE	
NOMINAL OUTPUT 额定输出功率	MCR	obt 4X2548 HP obt 4X1900 KW
NOMINAL SPEED 额定转速	RPM	1800
GENERATORS OUTPUT 发电机输出功率	MCR	obt 4X2282 KW obt 4X1825 KW

SPEED 航速	AT: DRAUGHT 5.0 m 吃水=5.0m	14.3 [kn]
COMPLEMENT 定员	TOTAL No. OF BERTHS 铺位总数	47+1

CLASS 船级社 AMERICAN BUREAU OF SHIPPING
+A1(E), OFFSHORE SUPPORT VESSEL
+HMS, +DPS-2, +FFV CLASS 1, +ACCU.



船东: MMC Ship Designing Ltd. / VMS19-47 船名: 平台供应船 船型: PLATFORM SUPPLY VESSEL		船东: 中远海运集团 船名: 平台供应船 船型: PLATFORM SUPPLY VESSEL	
GENERAL ARRANGEMENT 1:200 比例: 1:200 日期: 2010.10.27		船东: MMC Design & Marine Consulting Ltd. 船名: 平台供应船 船型: PLATFORM SUPPLY VESSEL 比例: 1:200 日期: 2010.10.27	
船东: MMC Design & Marine Consulting Ltd. 船名: 平台供应船 船型: PLATFORM SUPPLY VESSEL 比例: 1:200 日期: 2010.10.27		船东: MMC Design & Marine Consulting Ltd. 船名: 平台供应船 船型: PLATFORM SUPPLY VESSEL 比例: 1:200 日期: 2010.10.27	
船东: MMC Design & Marine Consulting Ltd. 船名: 平台供应船 船型: PLATFORM SUPPLY VESSEL 比例: 1:200 日期: 2010.10.27		船东: MMC Design & Marine Consulting Ltd. 船名: 平台供应船 船型: PLATFORM SUPPLY VESSEL 比例: 1:200 日期: 2010.10.27	