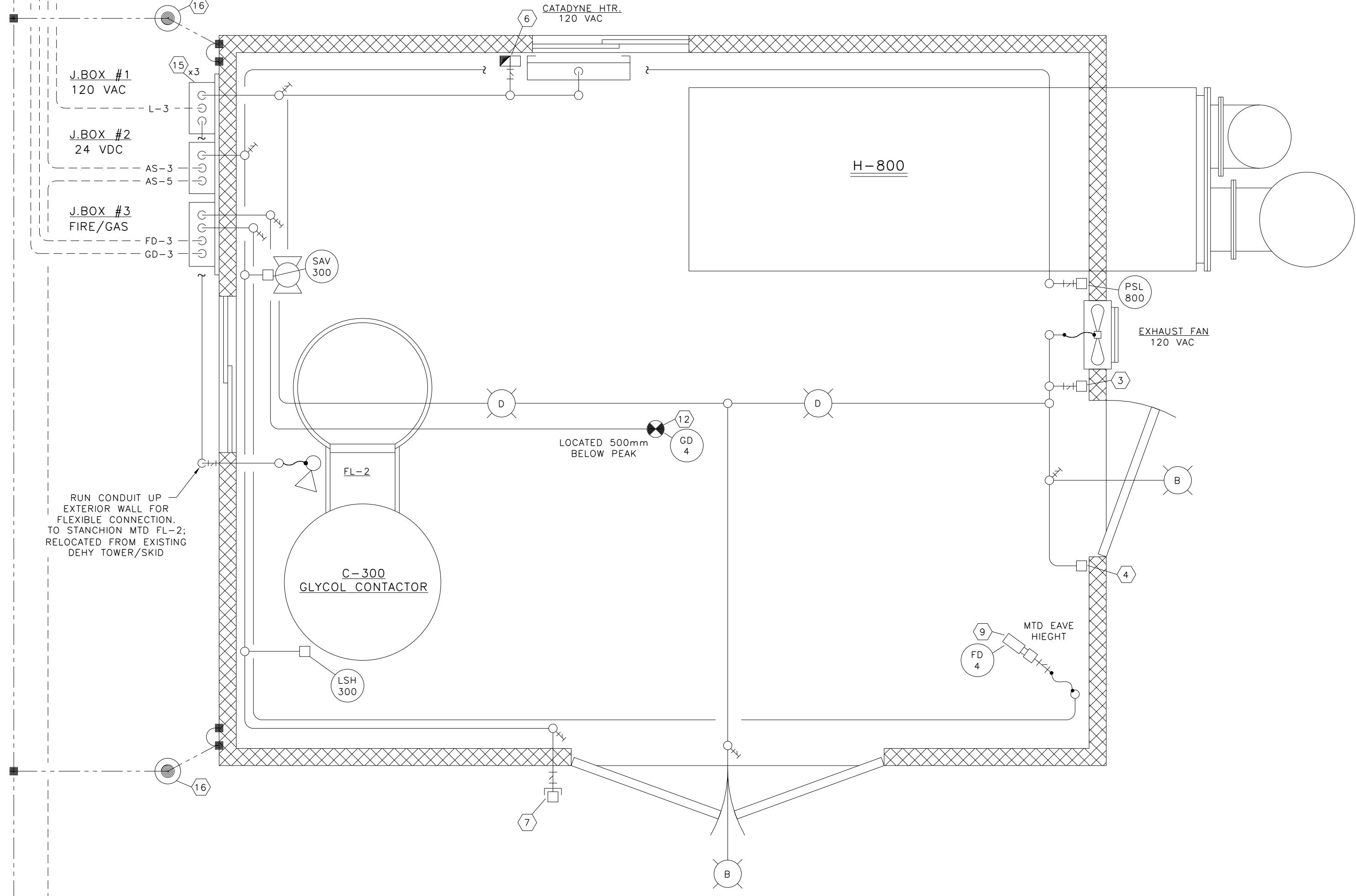
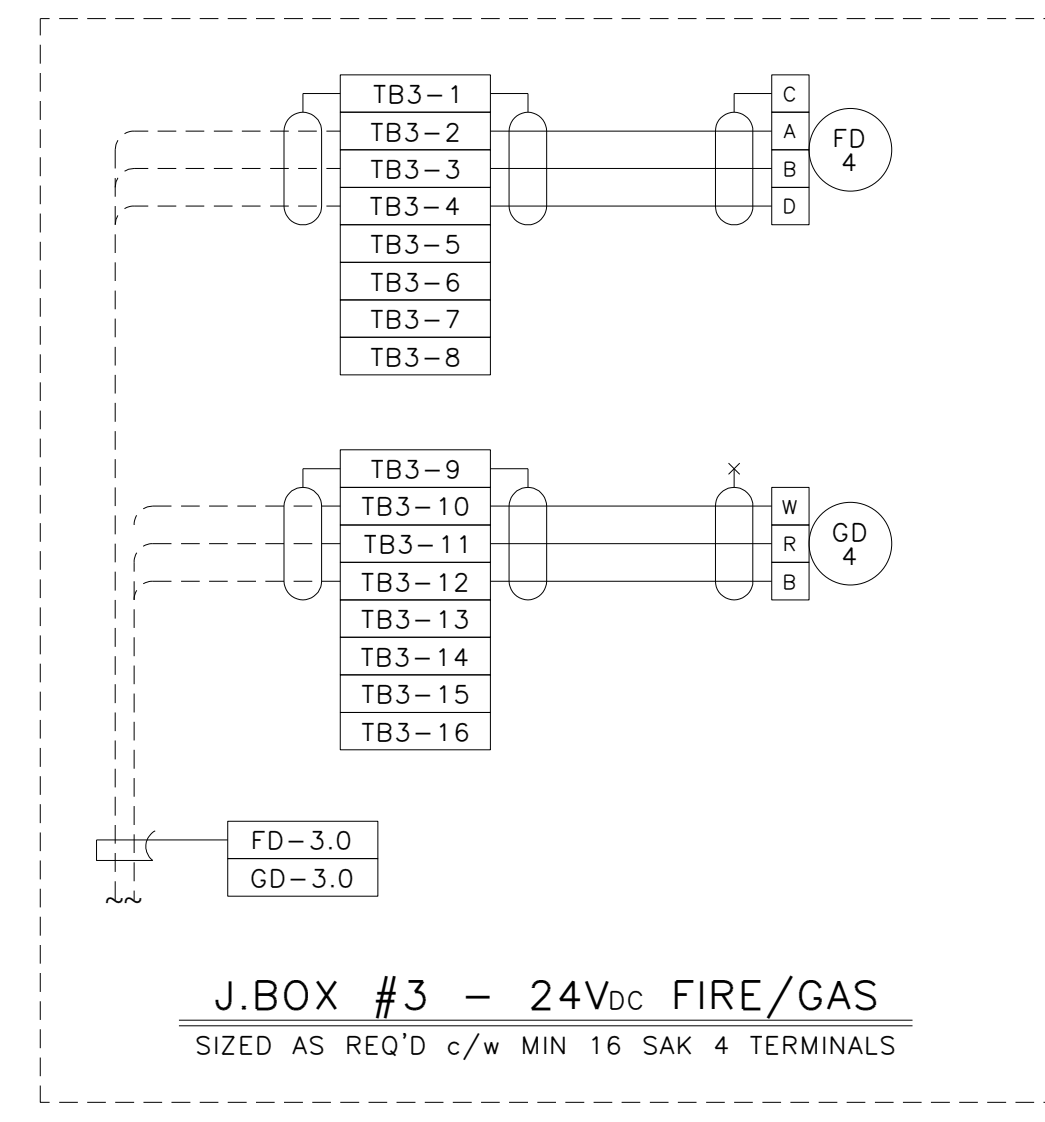
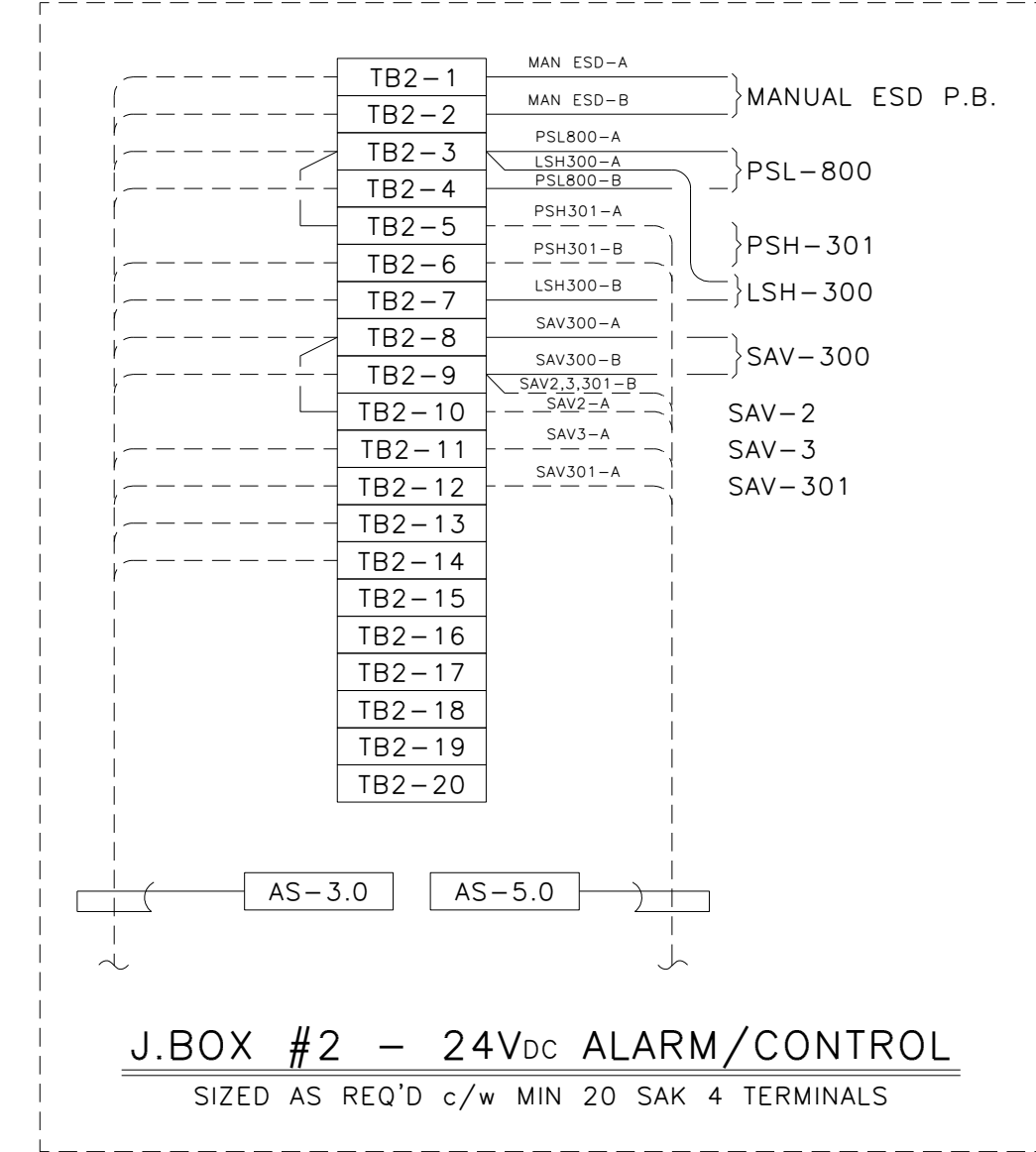
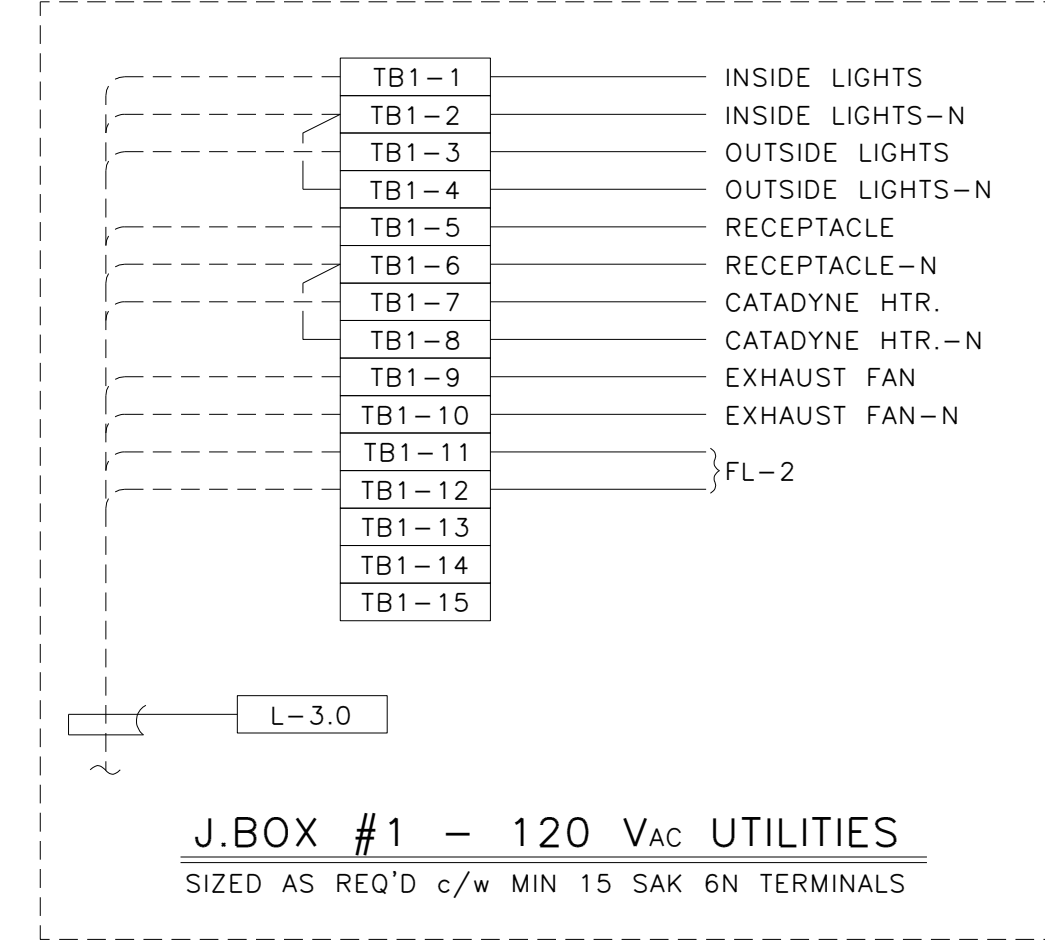


CONT. ON DWG. D-7225-E-00-01-A



GLYCOL DEHYDRATION UNIT  
5182x4267

CONT. ON DWG. D-7225-E-00-01-A



**BILL OF MATERIALS**

- FIXTURES**
- CROUSE HINDS #EVMA-43151 120V, 150W HPS PENDANT MOUNT, EXPLOSION PROOF FIXTURE c/w GLOBE, GUARD AND LAMP.
  - CROUSE HINDS #XMBF25GP 120V, 150W INCANDESCENT, VAPOUR PROOF, WALL MOUNT OUTDOOR FIXTURE c/w GLOBE, GUARD AND LAMP.
  - CROUSE HINDS #EVMBX-43151 120V, 150W HPS WALL MOUNT EXPLOSION PROOF FIXTURE c/w GLOBE, GUARD, LAMP AND WALL MOUNT BASE.
  - CROUSE HINDS #EVA-215 120V, 200W INCANDESCENT, EXPLOSION PROOF PENDANT MOUNT INDOOR FIXTURE c/w GLOBE, GUARD, LAMP.
  - CROUSE HINDS #VXHA-42GP 120V, 200W INCANDESCENT, STANCHION MOUNT FIXTURE c/w GLOBE, GUARD, LAMP.
  - CROUSE HINDS CLASS 1, DIV. II, 120V, 150W HPS PENDANT MOUNT FIXTURE c/w GLOBE, GUARD, LAMP.
  - CLASS 1, DIV. 1, 24VDC STROBE - (RED) BEACON.

- MATERIALS**
- CROUSE HINDS #EFS21299, EXPLOSION PROOF 3 POS. H.O.A. SWITCH.
  - CROUSE HINDS #EFS-2199, 120V, 1hp, EXPLOSION PROOF MANUAL MOTOR STARTING SWITCH c/w ALLEN BRADLEY BULLETIN 600 SWITCH AND P-HEATER.
  - CROUSE HINDS #EFS-2129, 120V, 20A, EXPLOSION PROOF ON/OFF TUMBLER SWITCH.
  - CROUSE HINDS #CPS-152 120V, EXPLOSION PROOF FACTORY SEALED RECEPTACLE.
  - CROUSE HINDS #EFS215-S153, EXPLOSION PROOF STOP/START STATION c/w LOCKOUT BAR FOR STOP BUTTON.
  - CATADYNE START STATION (120VAC) COMPRISED OF:
    - (1) EFS-C-272 OUTLET BOX.
    - (1) DSD-933 ON/OFF.
    - (1) DSD-947-J1 RED 120 VAC PILOT LIGHT.
  - CROUSE HINDS #EFS-2184 RED "ESD" PUSHBUTTONS, c/w RED WEATHER SHROUDS AND LARGE WARNING LAMICOID.
  - OWNER SUPPLIED CL-1, DIV-1 SPEED POTENTIOMETER.
  - DETRONICS MOD. #U780286075 24VDC U.V. TYPE FIRE XMITTER
  - DETRONICS MOD. #U8810B1001 H2S SENSOR AND XMITTER, 0-100ppm; 0-20ma 24 VDC, c/w CL-1, DIV.-1 HOUSING.
  - DETRONICS MOD. #500 COMBUSTABLE GAS SENSOR AND XMITTER (0-20ma, 24VDC); c/w CL-1, DIV-1 HOUSING, AND DETRONICS SEPARATION KIT c/w MOD. #MW226365-002 AND MOD. #MW225777-001.
  - GENERAL MONITORS MOD. #10001-1 COMBUSTIBLE GAS DETECTION SENSORS c/w CL-1, DIV.-1 HOUSINGS.
  - GENERAL MONITORS MOD. #FL801 U.V. SENSORS c/w SWIVAL MOUNTS.
  - HONEYWELL #T6051B1014, EXPLOSION PROOF THERMOSTAT 120V, 10A, RANGE 5 TO 30 DEGREES C., SPDT.
  - NEMA 4 ENCLOSURE, STEEL, SEAM WELDED CONSTRUCTION, PIANO HINGED DOOR, SINGLE PADLOCKABLE HASP. SIZE AS REQUIRED c/w BACK PAN, TERMINAL BLOCKS AND HARDWARE.
  - 10' x 3/4" GROUNDRODS AND GROUNDWELLS c/w COVERS.
  - TRUCK GROUNDING CABLE ASSEMBLY (REEL TYPE) c/w CABLE AND CLAMP.
  - DETRONICS MOD# C7050B c/w SWIVAL U.V. DETECTOR.

**NOTES:**

- ALL J.BOXES SHALL BE STEEL (ALUMINUM NOT REQUIRED).
- ALL TERMINALS SUPPLIED SHALL BE c/w REQUIRED MOUNTING HARDWARE AND INDIVIDUAL TERMINAL NUMBERS/TAGS.
- ALL WIRING TO THE SKID DEVICES SHALL BE TAKEN FROM THE RIGHTHAND SIDE OF THE TERMINALS, DIRECT WITHOUT SPLICES OF ANY KIND.
- WIRING FOR ALL DEVICES SHALL BE TAGGED AS PER THE J.BOX LAYOUTS.
- FIELD CONTRACTOR SHALL ENSURE ALL INCOMING/EXITING TECK CABLES ARE c/w GROUNDING BUSHINGS.
- ALL J.BOXES ARE TO BE c/w LAMICOID NAME PLATES AS PER DRAWING DESCRIPTIONS.
- FIELD CONTRACTOR WILL BE RESPONSIBLE FOR GROUNDING AS WELL AS THE PACKING AND POURING OF ALL SEALS. THIS APPLIES WHETHER OR NOT THE SKID ARRIVES PRE-WIRED.
- CONDUIT METHOD WILL BE R.G.S.
- ALL CABLES TO ENTER/EXIT THE BOTTOM OF THE J.BOXES. ALL THE CONDUITS TO ENTER/EXIT THE TOP OF THE J.BOXES.

**GENERAL NOTES:**

- "POST CONSTRUCTION DRAWINGS" ARE GENERATED FROM CONSTRUCTION CHANGE INFORMATION FORWARDED TO BOWER DAMBERGER ROLSETH ENGINEERING LTD. BY THE OWNER'S FIELD SUPERVISORS AND OR HIRED CONTRACTORS. ANY CHANGES NOT DOCUMENTED WILL NOT APPEAR ON THE DRAWINGS AND THEREFORE THE DRAWING MAY NOT BE AN ACCURATE REPRESENTATION OF THE CONSTRUCTED FACILITY.
- PRIOR TO THE COMMENCEMENT OF ANY CONSTRUCTION AND OR EXCAVATION IT SHALL BE THE RESPONSIBILITY OF THE OWNERS REPRESENTATIVE TO VERIFY THE LOCATION AND STATUS OF ANY PIPING, ELECTRICAL, EQUIPMENT OR BUILDINGS.
- ANY REVISIONS MADE TO EXISTING EQUIPMENT, PIPING OR ELECTRICAL ON A FACILITY NOT DESIGNED BY B.D.R. ENG. LTD. IS ONLY SHOWN AS A REPRESENTATION OF WHAT EXISTS AND MUST BE VERIFIED BY THE OWNER.

NO.	REVISION	BY	DATE	CHK.
1	REVISED TITLE BLOCK	FC	03.10.03	WJC
0	AS BUILT	GRB	02.09.08	WJC
C	ISSUED FOR CONSTRUCTION	EM	02.08.07	GRB
B1	ISSUED FOR FIELD BID	EM	02.07.27	GRB
B	ISSUED FOR SKID BID	PTH	02.07.08	GRB
A	ISSUED FOR APPROVAL	PTH	02.07.07	

PROJECT #2615

**BOWER DAMBERGER ROLSETH ENGINEERING LTD.**

FORT KENT ADDITION  
PROCESS AREA SKIDS  
GLYCOL DEHYDRATION UNIT - ELEC LAYOUT

SCALE: 1 : 20      DRAWING NUMBER: D-7225-E-00-03-B      REV: 1

7225003B 92-09-10 B:44 AM