

KGK JET CCS-R

Full stainless steel body, automatic nozzle capping mechanism.
Robust heavy duty model.



<http://www.kishugiken.co.jp/>

● Full Stainless Body

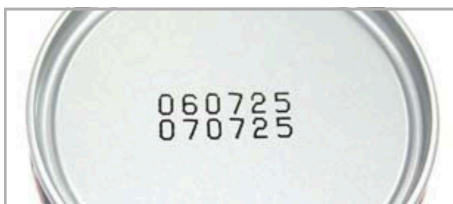
- Full stainless steel body and casing, resistant against natural elements and easy to maintain.

● Flexible Environment

- Built-in heater inside printhead, so that printer can run from 0° C to 40° C temperature.
- Built-in air pump, to generate positive pressure inside the printhead preventing contamination from outside. Easy to use even in dusty environment.



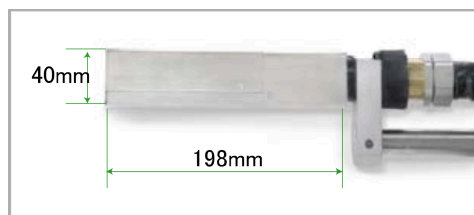
Accurately printing on small area



Printing not peeling off (great bonding strength)



Printing on substrate like glass (quick drying)



Small printhead dimension

● Easy Operation

- Equipped with full keyboard for easy WYSIWYG interface and operation.
- LCD screen will display the printer output during printing and editing as well.



* "What You See Is What You Get" LCD interface. Easier to preview, edit, and set message to print.

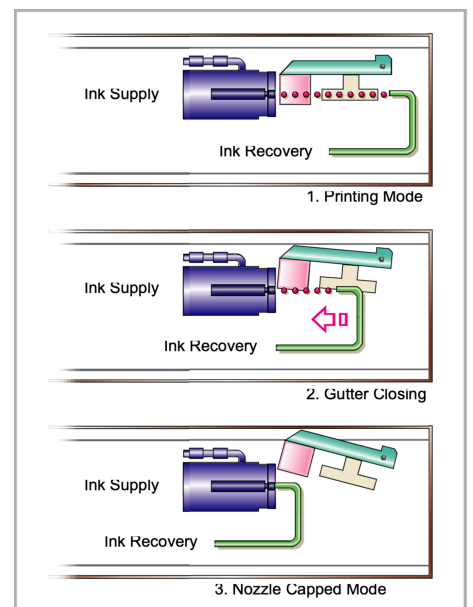
● Easy Installation

- Small printhead dimension allows printing close to various substrate shapes, and easy to install even in limited production space.



● Simple Maintenance

- Built-in interval mechanism automatically circulates ink even when the device is not in use, and gutter will capped nozzle in air-tight condition.



Mechanism of automatic nozzle capping

● SPECIFICATIONS

| Item | Parameter Value |
|--|--|
| Technology | Continuous Ink Jet |
| Nozzle Diameter | 40 / 50 / 60 μ m |
| Printing Height | 40 μ m nozzle: 0.8 ~ 5 mm 50 μ m nozzle: 1 ~ 10 mm 60 μ m nozzle: 2 ~ 10 mm |
| IP Rating | IP54 |
| CE Marking | Compliant |
| ROHS Directive | Compliant |
| Max Printing Speed (characters / second) Font 5x5, 1 char spacing | 2666 (40 μ m nozzle) *Also depends on the ink used 2041 (50 μ m nozzle) 1780 (60 μ m nozzle) |
| Printing Substrate | Metal, Glass, Plastic, Film, Rubber, Etc |
| Ink | Dye or Pigment Ink * Please inform us if you need special requirement ink |
| Number of Lines and Fonts | 1-4 lines: 5x5 1-3 lines: 7x5, 7x8 1-2 lines: 9x7, 9x9, 10x8, 12x10 1 line: 16x12, 16x16, 24x18, 24x24 |
| Number of Characters per Message | Up to 512 Characters |
| Font Type | Gothic Mincho |
| Character Type | Alphabet (upper/lower case), Number, Symbol, Hiragana, Katakana, Kanji (JIS first and second), Simplified Chinese (GB212), User Character |
| Date Time Printing Function | Roman Calendar, Japanese Era, Month, Day, Day of the week, hour (12/24H), Day of the year, Week of the year, Upper and middle of month (variable period setting), AM/PM, Character assignment function (Assign year, month, day, hour, minute, second to another character of one digit) |
| Numbering Function | Up to 8 digits, Optional initial value setting, Up/down, Repeat (1 number can be repeated between 1 - 9999 times), Zero suppression function, Numbering character assignment function (Can be assigned to character other than numbers) |
| 1D Barcode | ITF, Code 39, Code 128, NW-7, JAN |
| Message Storage | 50 Messages |
| Data Input | Keypad, RS232C Communication |
| Communication Port | RS232C 1CH Maximum 76,800bps |
| External Port | Sensor, Encoder, Signal Tower |
| Head Conduit Length | 3,5 Meter |
| Operating Temperature | 0~40°C 10~85% (No condensation) |
| Power Supply/Consumption | 220 VAC 50/60Hz 70W (100VA) |
| Head Positive Pressure | Built-in Air Pump |
| Dimensions (width x depth x height) | Controller: 450x300x674 mm Head: 40x199x40 mm |
| Weight | 30 Kg |
| Grounding | Type D Grounding |

● DIMENSIONS

