



Accommodation Work Barge



✓ Basic Specifications

- LOA: 100.00M
- Breadth Moulded: 30.50M
- Depth Moulded: 7.62M
- Summer Draft: 5.50M
- Free Deck Area: 1,138.00M
- Gross Tonnage: 10,575.00
- Deadweight (Summer Draft): 9,878.00
- Deck Strength: 15 Tons/m²

✓ Its Origins & Status

- Built in 2009 by Oriental Precision Engineering in Korea
- Formerly “GSP Bigfoot 3,” Capitalized in Nov-12
- On-Contract in Congo
- Contract Term: 1-Jan-19 to 31-Dec-22. Ext. 2yrs. until Dec-24
- DD due 5-Feb-24
- Flag: Marshall Islands

✓ Capacities (m³)

- Water Ballast Tanks: 6,602.3
- Drill Water Tanks: 1,263.0
- Fresh Water Tanks: 2,117.8
- Cooling Water Tanks: 356.8
- Anti-Rolling Tanks: 2,833.2
- Fuel Oil Tanks: 1,809.8
- Sewage/Bilge/Dirty Oil Tanks: 50.3

✓ Other Equipment Capacities

- Oily Water Separator: 1 x 2.5 m³/hr
- Sewage Treatment: 1 unit, for 330 men
- Fresh Water Maker: 2 x 50 Tons/ day
- Ballast/Drill Water Pump: 2 x 500 m³/hr @ 40 m head

Accommodation Work Barge



✓ Safety Equipment¹

- Rescue Boat: 1 X 6 Men C/W Pivot davit
- Inflatable Life raft: 24 X 25 Men + 2 X 30 Men

✓ Fire Fighting Equipment²

- Fire Pumps Capacity: 2 x 130 m³/hr. @ 8 bar
- Foam Pump for Helideck: 1 x 123 m³/hr @ 9 bar
- Foam Pump for Helideck: 1 x 80 m³/hr @ 10 bar
- Sprinkler Pump: 1 x 84 m³/h @ 6.5 bar

1. As per SOLAS / LSA Code & Flag State Requirements.

2. 1 x Fixed Fire-Fighting System (CO₂) and 1 x Fixed Local Application System (Water Mist) to Machinery Space of Cat A, Fire Detection and Alarm System and Fire Fighting Equipment are in accordance with SOLAS/ FFS Code & Flag State Requirements.

✓ Workshop Equipment Facilities

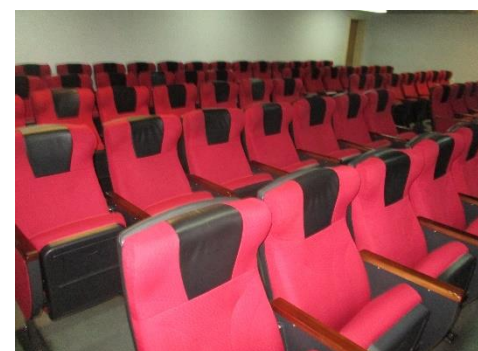
- Fabrication Workshop: 60 m² (approx.) on main deck
- Welding Workshop: 60 m² (approx.) on main deck
- Workshop Equipment: Welding Machine (400 A), Lathe, Milling, Drilling, Grinding Machine, Table Vice

✓ Anchor Mooring System

- Anchor Type: High Holding Power Anchor
- Anchor Capacity: 1 x 5000 kg
- Anchor Wire: 1 x 450 m L, 56 mm Dia. Wire.
- Anchor (8 Point Mooring): 8 x 7T Flipper Delta Anchor

Accommodation & Facilities

Accommodation	
■ 1 Man Suite Cabin x 4	4
■ 1 Men Cabin x 6	6
■ 4 Men Cabin x 80	320
■ Total Persons On Board	330
■ Hospital Room	2
■ Medic Room	1



Other Facilities	
■ Offices	Barge Master Office, Client Office, Maintenance Office, Camp Boss Office, PM Office, Site Manager Office,
■ Conference Room	Provided on office deck
■ Mess Room	Accommodate up to 150 people
■ Officer Mess Room	Accommodate up to 20 people
■ Recreation Rooms	2 on B Deck and 1 on Office Deck
■ Auditorium	Provided on B deck
■ Gymnasium	Provided on Office Deck
■ Internet Room	Provided on Office Deck
■ Waiting Room	Provided on Office Deck

Deck Equipment & Power Generation

Deck Equipment

■ Anchor Windlass	Electro Hydraulic System, Windlass with 20 Tons Duty Pull @11 m/min.
■ Tugger Winches	4 x 10 Tons @ Electro. Hyd. Sys.
■ Mooring winch for 8 Point Mooring System	8 Winches having drum capacity of 52 mm Dia. X 1500 m Wire, and 70 Tons Duty Pull, 7 to 30 m/min.
■ Main Crane	Diesel-Hyd. Offshore Crane, main hoist SWL 68 Tons @6.8 m radius, 11 Tons@ 47.6 m, max. radius, Aux hoist SWL 9 Tons @ all radius and 2 m extension from main hoist.
■ Provision Crane	Electro Hyd. Fixed boom, 2 Tons @ all radius, max. radius 10.3 m.
■ Helideck	Capable up to Sikorsky S-92A



Power Generation

■ Main Generators	5 x 590 kW (440V/3Ph/60Hz)
■ Emergency Generators	1 x 99 kW (440V/3Ph/60Hz)

Operations Organization

Rank	No. of Pax	Crew Employment by:	Crew Rotation
MASTER	1	Bumi	90 days
Che. OFFICER	1	Bumi	90 days
Che. ENGINEER	1	Bumi	90 days
2nd ENGINEER	1	Bumi	90 days
3rd ENGINEER	1	Bumi	90 days
ETO	1	Bumi	90 days
OILER	2	Bumi	90 days
ENG.FITTER	1	Bumi	90 days
BOSUN	1	Bumi	90 days
CRANE OPERATOR	1	Diamond SA	90 days
RADIO OPERATOR	2	Diamond SA	90 days
ELECTRICIAN	1	Diamond SA	90 days
PLUMBER	1	Diamond SA	90 days
BOSCO	1	Diamond SA	90 days
ABLE BODIED	3	Diamond SA	90 days
ADMINISTRATOR	1	Diamond SA	90 days
Total:	20	pax	



Operations Track Record

Contract Summary

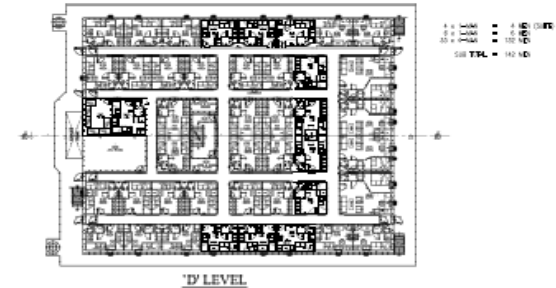
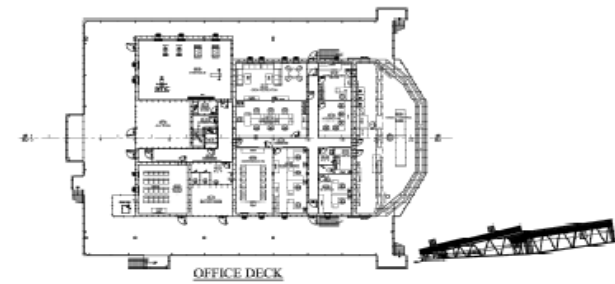
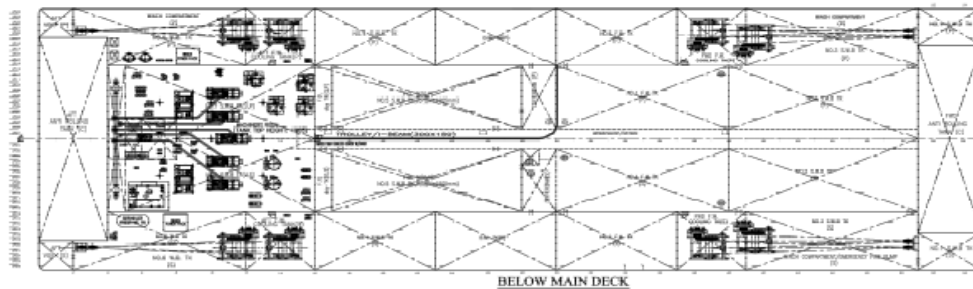
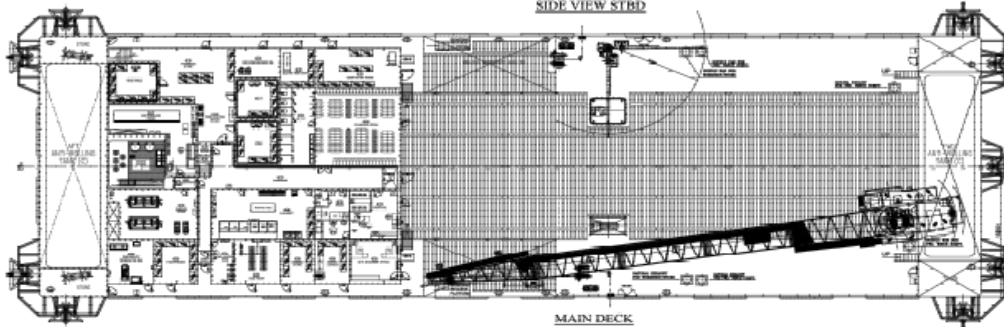
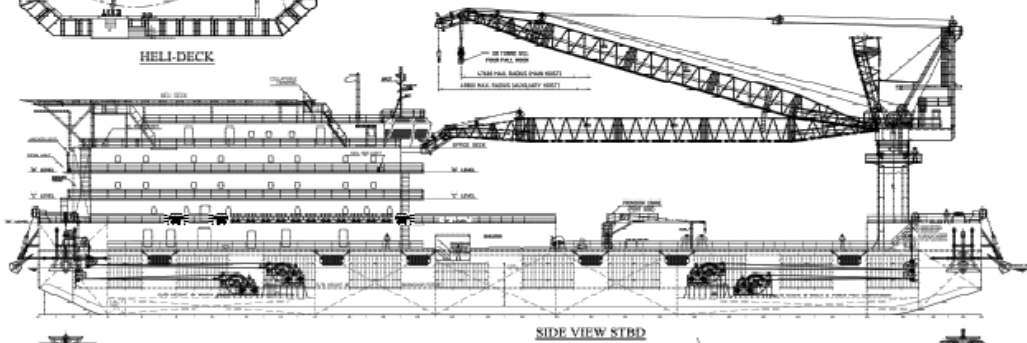
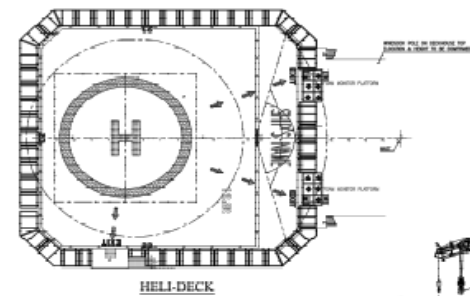
VESSEL NAME	CHARTERER	CONTRACT NO.	TOTAL CONTRACT DURATION	FIRM CONTRACT DURATION		FIRM PERIOD	DURATION	EXT. CONTRACT DURATION		EXT. PERIOD
	Diamond (Congo)	BIMCO SUPPLY TIME 89	2.3 Years	14.01.2013	13.01.2015	2	Year	14.01.2015	13.01.2017	1 + 1
	Drydock (Namibia)		5.5 months	30.04.2015	22.10.2015					
	In between charter (IBC)		1 month	23.10.2015	30.11.2015					
	Diamond (Congo)	BIMCO SUPPLY TIME 89	4 Years	01.12.2015	01.10.2018	3	Year	01.01.2019	31.12.2019	1
	Drydock (Namibia)		3 months	02.10.2018	31.12.2018					
	Diamond (Congo)	BIMCO SUPPLY TIME 89	4 Years	01.01.2019	31.12.2021	2	Year	01.01.2022	31.12.2023	2

Activity Summary

No	Activity	Country	Years
1	Working	Congo	Jan'13 – Apr'15
2	Drydock	Namibia	Apr'15 – Oct'15
3	In between Charter (IBC)	Congo	Nov'15 – Dec'15
4	Working	Congo	Dec'15 – Oct'18
5	Drydock	Namibia	Oct'18 – Dec'18
6	Working	Congo	Jan'19 – Dec'21



General Arrangement



PRINCIPAL PARTICULARS

LENGTH O.A. ----- 100m (328ft)
 BEAM MLD. ----- 30.5m (100ft)
 DEPTH MLD. ----- 7.62m (25ft)
 DESIGN DRAFT ----- 5.5m
 COMPLEMENT ----- 330 MEN

GENERAL ARRANGEMENT	
SHIP NO.	1985-02301-01
SHIP NAME	1985
SHIP TYPE	COMPASS ENERGY PTL
DESIGNER	COMPASS ENERGY PTL
DATE	1985-02-01
BY	COMPASS ENERGY PTL
CHECKED BY	COMPASS ENERGY PTL
APPROVED BY	COMPASS ENERGY PTL

THANK YOU

