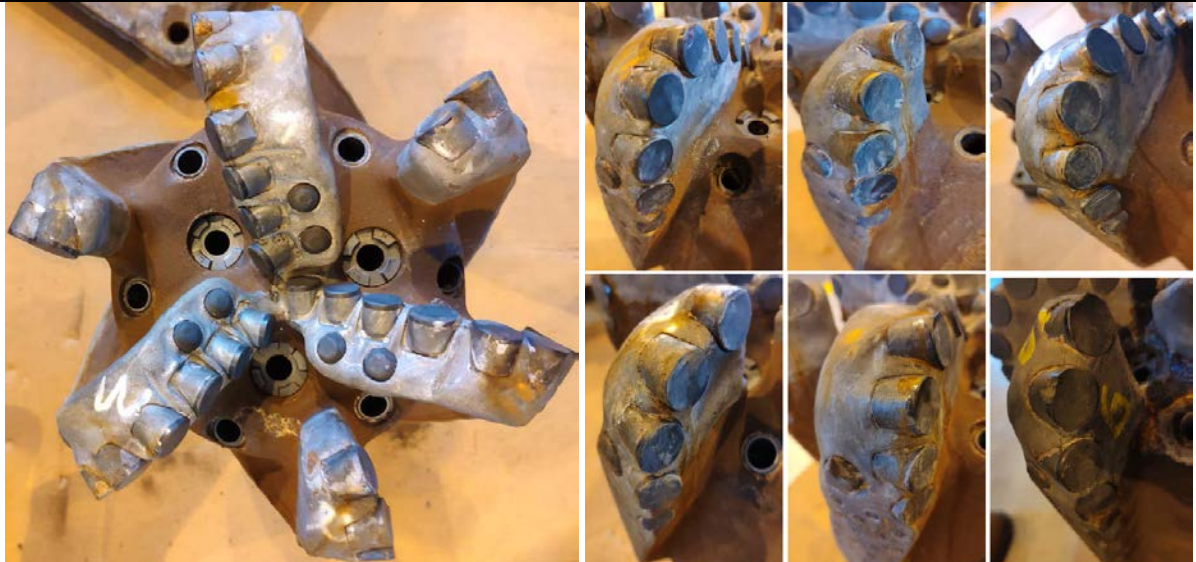


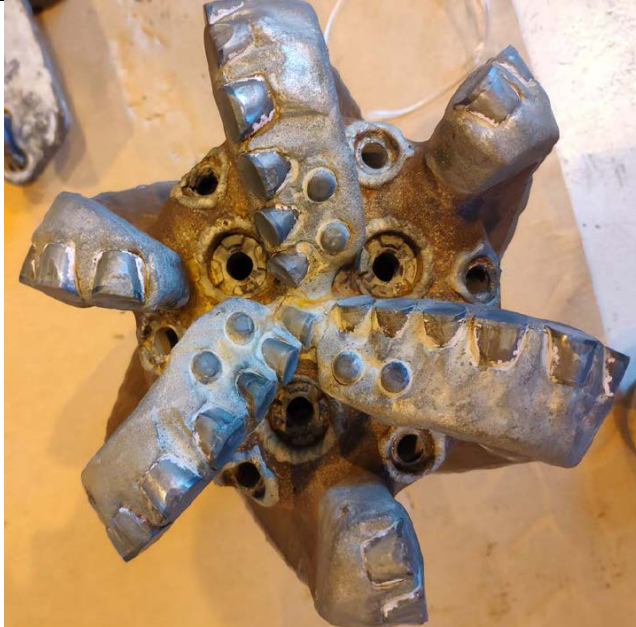


S/N	Description	QTY
BIT,8-1/2",16MM,3X TNZNOZ,SKH616S-C3A		
A219953		27
A213022		
A205735		

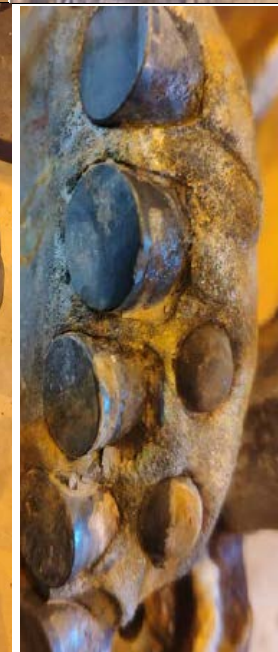
A215913



A205733



A205734



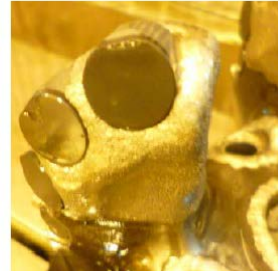
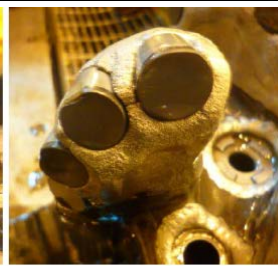
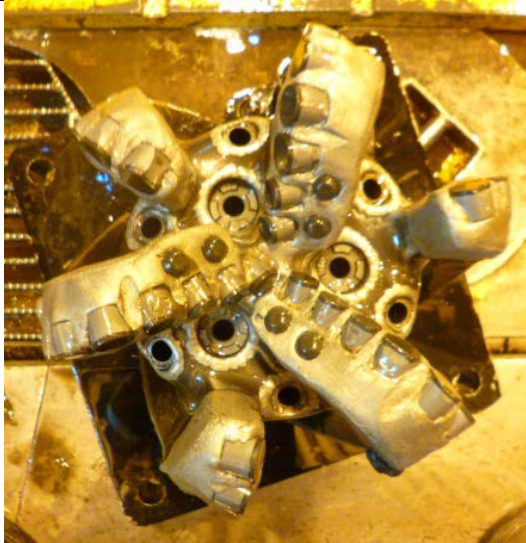
A206142

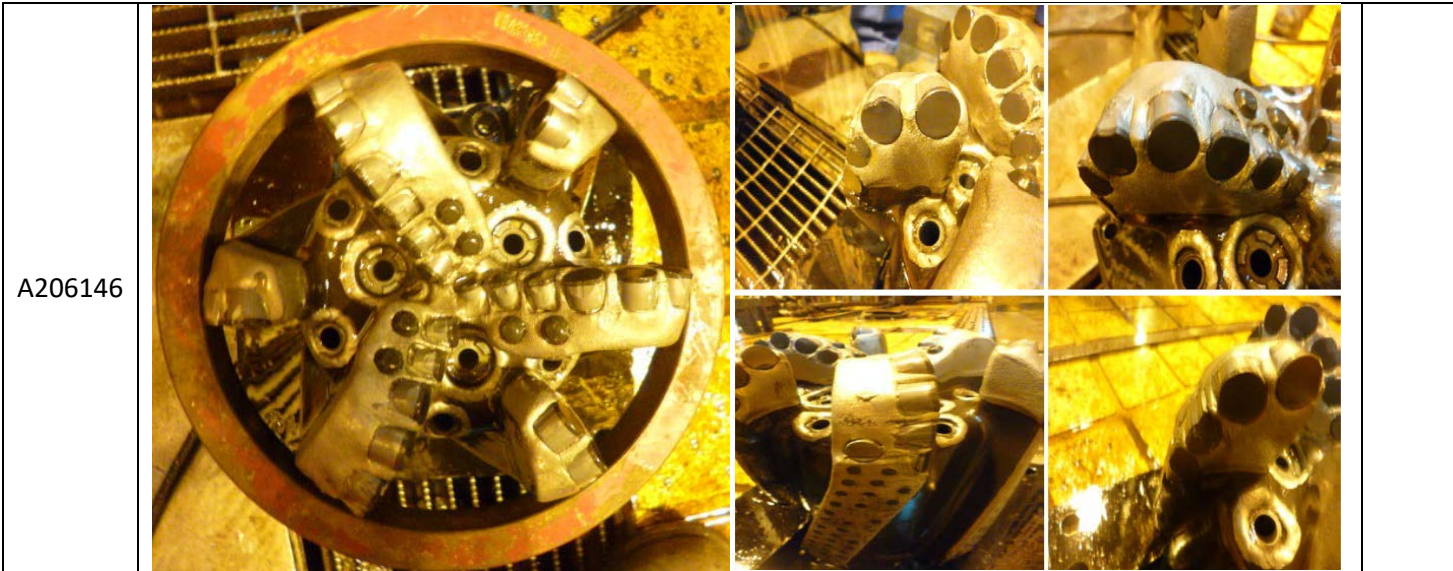


A206143



A206144





A215916 A233868 A205727 A205729 A205731 A205732 A213023 A215924 A215925 A215909	 <p>A215916</p> <p>DG: 2-2-WT-A-X-I-CT-DTF</p>	 <p>A233868</p> <p>DG: 2-2-WT-A-X-I-CT-DTF</p>	 <p>A205727</p> <p>DG: 2-1-CT-N-X-O-WT-TD</p>
	 <p>A205729</p> <p>DG: 2-1-WT-C-X-I-WT-TD</p>	 <p>A205731</p> <p>DG: 2-2-WT-S-X-I-CT, HC-TD</p>	 <p>A205732</p> <p>DG: 3-1-WT-N, T, S-X-I-CT-TD</p>
	 <p>A213023</p> <p>DG: 2-1-WT-NTS-X-I-DL-TD</p>	 <p>A215924</p> <p>DG: 2-4-WT-N,S-X-I-RO-DTF</p>	 <p>A215925 A215909</p> <p>DG: 1-3-CT-S, G-X-I-WT-TD DG: 3-2-WT-A-X-I-NO-TD</p>

BIT, 8-1/2", NOV, RSH616S-C1A, 10078019. Manufacturer: NOV			6
--	--	--	---

E172653 E172655 E172656 E189977 E189979 E189981	 <p>E172653</p>	 <p>E172655</p>	 <p>E172656</p>
	 <p>E189977</p> <p>DG: 1-1-WT-S-X-I-NO-TD</p>	 <p>E189979</p> <p>DG: 2-1-CT-N-X-1-WT-TD</p>	 <p>E189981</p> <p>DG: 2-1-WT-N/C-X-I-CT-TD</p>

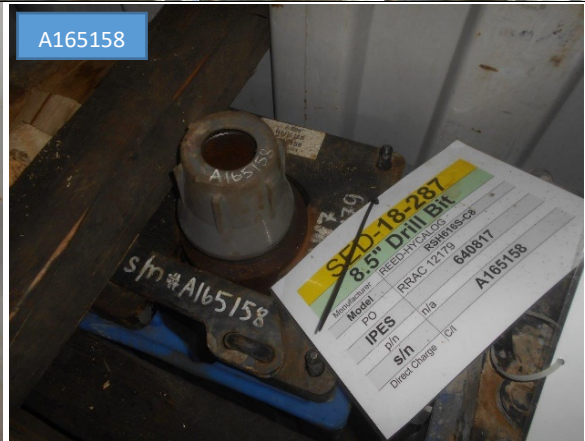
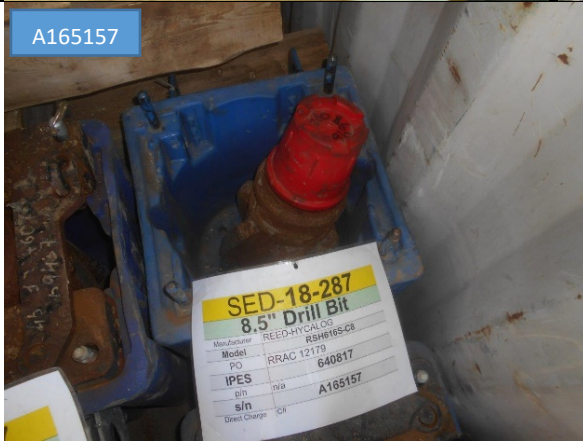
BIT, 8-1/2", RSH616S-C8, 6" TAPERED. Manufacturer: REED HYCALOG

3

A166294



A165157
A165158



BIT, 12-1/4", E616-B1, NOV, 10073094. Manufacturer: REED HYCALOG

1

A163641



Bit 24" XR+VCPS (115) Nozzled with Series 105, TFA = 1.193 sq. in, 1 ea. 16/32" 1 ea. 18/32" 1 ea. 20/32" 1ea. 24/32", center jet, Vectored flow hydraulics

1

PW0343

