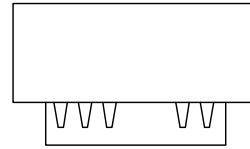


SOUTHWEST ELECTRIC CO. MADE IN OKLAHOMA CITY, OK USA

FACT III IS FULL OMP CAPACITY TRANSFORMER

kVA 100 HZ 60 PHASES 3

	VOLTAGE	AMPERES	kVBIL	COND.
PRIMARY	480	120	30	AL
SECONDARY	600-2078	96-28	45	AL



PLAN OF TANK

ELECTROSTATIC SHIELD

CLASS ONAN 65°C RISE CONTINUOUS

LIQUID LEVEL AT 25°C IS 6" BELOW LID

IMPEDANCE 3.88 % AT 85°C TAP 3-C TYPICAL

INSULATING LIQUID (NON-PCB)

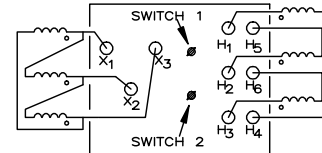
MINERAL OIL 130 GAL. 975 LBS.

UNTANKING WEIGHT 885 LBS.

TOTAL WEIGHT 2565 LBS.

YEAR OF MANUFACTURE _____

DESIGNED FOR VARIABLE FREQUENCY APPLICATION



FRONT VIEW FACING TERMINAL CHAMBER

DE-ENERGIZE TRANSFORMER BEFORE CHANGING TAPS

VOLTAGE ACROSS X ₁ -X ₂ -X ₃	SECONDARY VOLTAGE ACROSS H ₁ -H ₂ -H ₃									
				TAP POSITION		TAP POSITION		TAP POSITION		
				SW1	SW2	△	∩	SW1	SW2	△
 480 V.			1	A	600	1039	3	D	925	1602
			1	B	625	1083	3	E	950	1645
			1	C	650	1126	4	A	975	1689
			1	D	675	1169	4	B	1000	1732
			1	E	700	1212	4	C	1025	1775
			2	A	725	1256	4	D	1050	1819
			2	B	750	1299	4	E	1075	1862
			2	C	775	1342	5	A	1100	1905
			2	D	800	1386	5	B	1125	1949
			2	E	825	1429	5	C	1150	1992
			3	A	850	1472	5	D	1175	2035
			3	B	875	1516	5	E	1200	2078
3	C	900	1559							

P.O. NO. _____ Tag NO. _____
 Serial NO. _____ Cat. NO. 71101Y4-3100

- Rev. 4: G. PHILLIPS 10/14/11 Changed IMPEDANCE
- Rev. 3: R. Leviner 5/10/11 Changed weights
- Rev. 2: R. Leviner 4/05/11 Changed weights
- Rev. 1: G. Phillips 3/29/11 ADDED MADE IN

	FACT III NAMEPLATE STEP-UP TRANSFORMER	8.5"x12.0" PLATE
	DRAWN BY: S. Richardson DATE: 7/26/06	MATL. .032 THICK, BLANK BLACK ANODIZED ALUMINUM
	DWG No.: 0000A706 SCALE: NONE	
	SOUTHWEST ELECTRIC CO. OKLAHOMA CITY, OKLAHOMA	SWE PART # 1710900-3